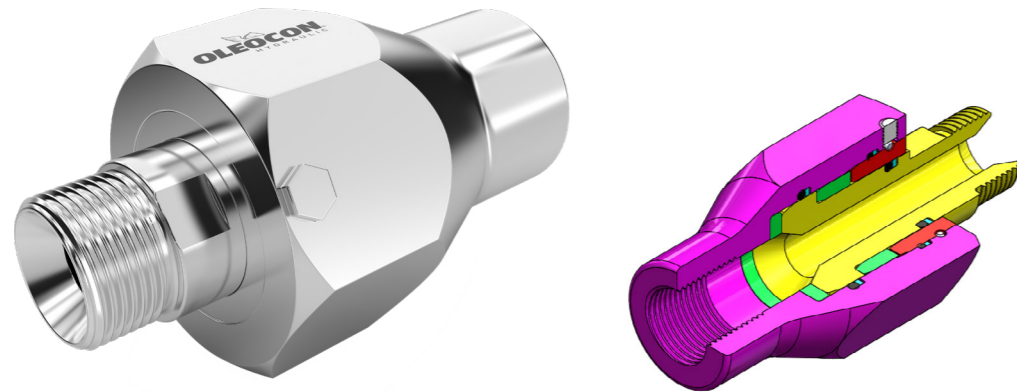


SWIWEL JOINT - SJS SERIES STRAIGHT



[CLICK HERE FOR 3D SECTION](#)

TECHNICAL FEATURES AND OPTIONS



Working Temperature
-20 °C / +80 °C



Material
Carbon Steel
Stainless Steel
Brass



Operating Pressure
Up to 350 Bar



Available Threads
BSP

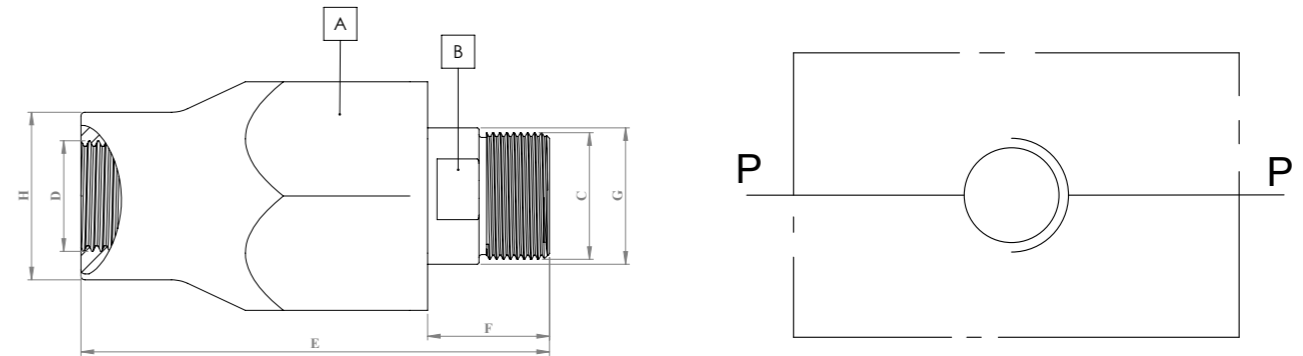


Available Sizes
From 1/4" to 1"



Sealing Description
NBR - FKM

TECHNICAL DRAWING



BODY SIZE	DESCRIPTION	Hex		THREAD SIZE		LENGTH		DIAMETER		WEIGHT				
		mm	inch			mm	inch	mm	inch	kg	lbs			
06	SJS-6-G14M	A	32	1.25	C	1/4	E	73,5	2,89	G	16	0,62	0,27	0,59
		B	13	0,51	D	1/4	F	19,5	0,76	H	24	0,94		
10	SJS-10-G38M	A	36	1,41	C	3/8	E	81	3,18	G	19	0,74	0,35	0,77
		B	15	0,59	D	3/8	F	22	0,86	H	26	1,02		
12,5	SJS-12-G12M	A	41	1,61	C	1/2	E	93	3,66	G	23	0,90	0,53	1,16
		B	19	0,74	D	1/2	F	25	0,98	H	32	1,25		
19	SJS-19-G34M	A	55	2,16	C	3/4	E	108	4,25	G	29	1,14	1,06	2,33
		B	27	1,06	D	3/4	F	28	1,10	H	38	1,49		
25	SJS-25-G1M	A	60	2,36	C	1	E	123	4,84	G	36	1,41	1,35	2,97
		B	32	1,25	D	1	F	32	1,25	H	44	1,73		

ISO 8434-6 - ISO 1179-1

BODY SIZE	WORKING PRESSURE		BURST PRESSURE	
	MPa	PSI	MPa	PSI
6	35	5076	100	14504
10	35	5076	100	14504
12,5	35	5076	100	14504
19	30	4351	100	14504
25	30	4351	100	14504

MAIN APPLICATIONS



INFORMATION

- SJS Series Hydraulic Straight Swivel Joints are mounted between a moving hose end and a fixed component to prevent hose damage by compensating the torsion and twisting.
- SJS Series Hydraulic Straight Swivel Joints are not suitable for fast or continuous rotations.They are suitable for slow rotations and high pressure applications.
- Safe and easy-to-use.

WARNING

- Please do not expose to abnormal operating conditions. (E.g. oscillations, impulse pressures, water hammering, cavitation, and proportions of solid materials and abrasives)
- Please do not touch the product, when the working temperature is lower than -20°C or higher than +50°C.
- Make sure the system pressure is below the maximum working pressure.
- Please ensure the cleanliness of all connection surfaces to avoid dirt or dust accumulation in the circuit.
- Please ensure that the OLEOCON product you have chosen is compatible with the temperature, material and pressure requirements of your system.
- Please contact OLEOCON technical support for any further questions.